

## Software that captures & processes all FKT series outputs

### Features

- ◆ **Easy to use:** Wizard style interface steps through the setup and operational procedures.
- ◆ **Remote monitoring:** Thanks to the serial interface, the FKT instrument can be placed at hundreds of feet from the computer.
- ◆ **Extendable:** The available FlowLink library allows a user to create a custom program to access the FKT instrument using popular programming languages.
- ◆ **Excel connectivity:** FlowScan can send data directly to a worksheet as the data is recorded from the meter.
- ◆ **Reads & Calculates:**
  - All available differential pressures
  - Absolute pressure
  - Temperature
  - Stagnation temperature
  - Relative humidity
  - Gas density
  - Gas velocity (even if compressible!)
  - Volumetric flow rate (FlowScan™ only)
  - Mass flow rate (FlowScan™ only)
- ◆ **Flow Surveys with Pitot tube (FlowScan™ only):** FlowScan™ easily calculates volumetric and mass flow rate for rectangular or circular ducts. FlowScan™ will indicate where to put the probe for each survey point. The program will step through the survey at the user's pace.
- ◆ **Data logging:** Save the data at user-defined intervals with automatic periodic backup.
- ◆ **Extensive set of metric and imperial units**

### Suite Contents

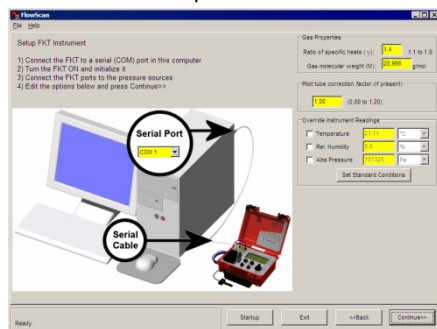
- ◆ **FlowScan™:** A stand-alone program that provides data logging and duct survey capabilities.
- ◆ **FlowScan Add-in:** A Microsoft® Excel® add-in that allows data logging directly into any Excel® worksheet.
- ◆ **FlowLink Library:** Programming interface for:
  - National Instruments LabVIEW® 5 and 7
  - Microsoft® Visual C++ 4
  - Microsoft® Visual Basic 6
  - Borland® C++ Builder 4
  - Borland® Delphi 5
- ◆ A serial cable
- ◆ User's guide and programming manual
- ◆ Software customization is available
- ◆ USB to serial adapter is an available option

### Requirements

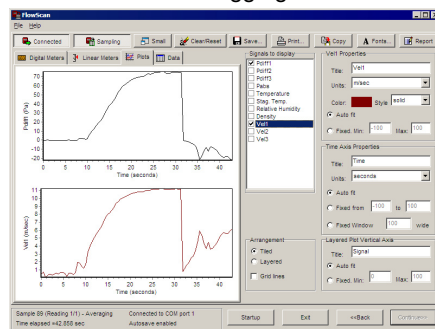
- ◆ Windows® 95, 98, ME, 2000, XP, Vista, 7 or 8.
- ◆ Serial port with a 9-pin connector or USB port with an optional USB to serial adapter.
- ◆ Microsoft Excel 97 or above for FlowScan Excel Add-In (32 bit only). Excel link from within FlowScan is compatible with 32 and 64 bit versions of Excel.
- ◆ Programming environment for developing applications that use the FlowLink library.

IN THE INTERESTS OF PRODUCT IMPROVEMENT, FLOWKINETICS™ LLC RESERVES THE RIGHT TO CHANGE SPECIFICATIONS WITHOUT ANY PRIOR NOTICE.

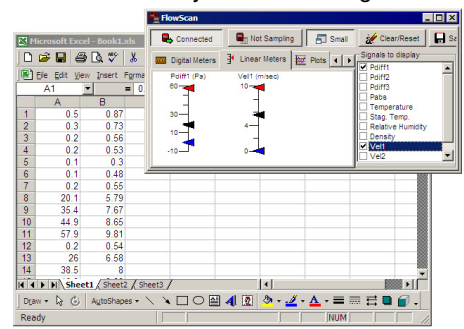
FlowScan™ Setup



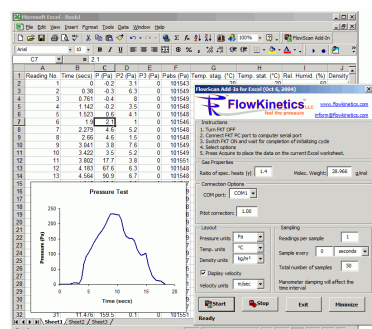
FlowScan™ Data Logging



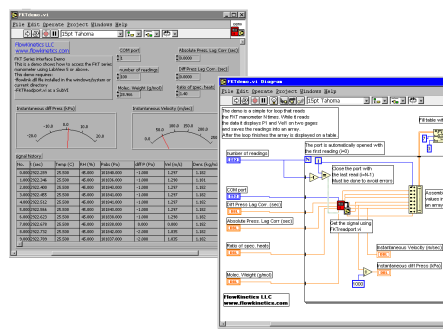
Excel connectivity with monitoring



FlowScan™ Add-In in Excel® 2000



FlowLink used with LabView® 5



FlowScan™ Survey of a Circular Duct

