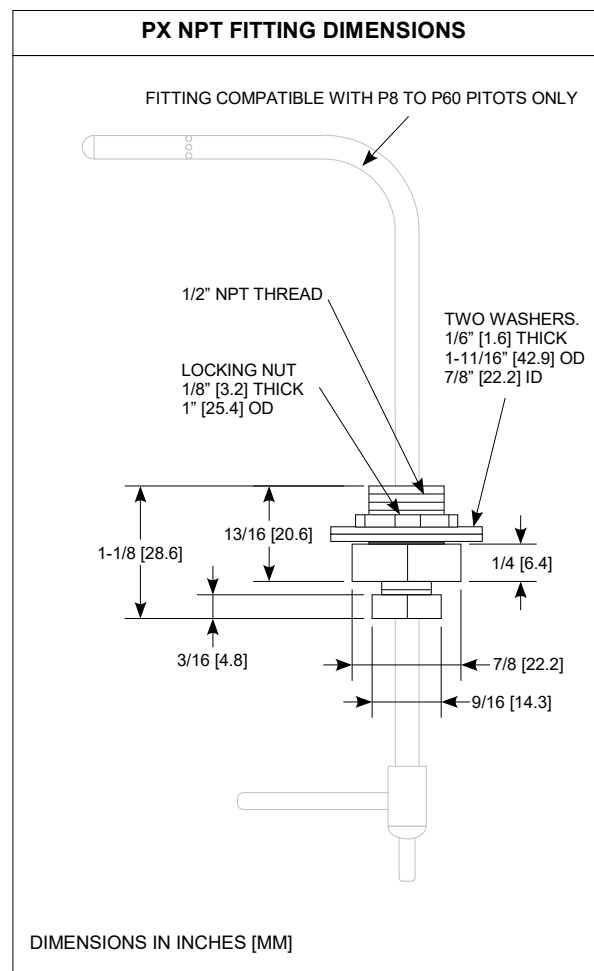
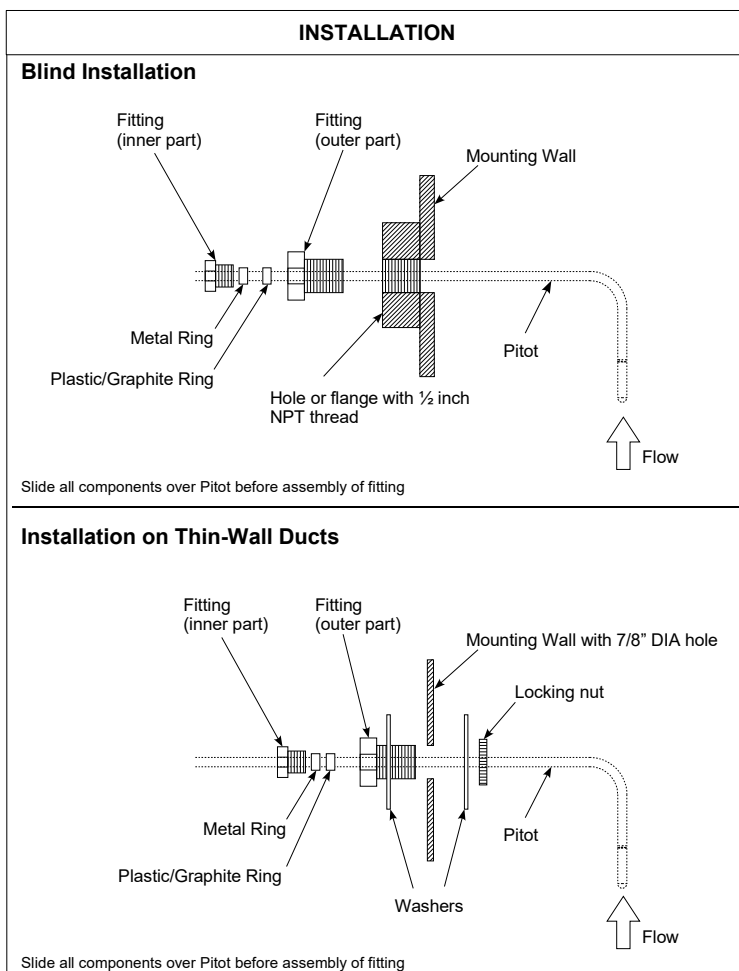


- The PX NPT fitting is a gland-type fitting that allows Pitots P8 to P60 (with a 5/16" tube diameter) to be mounted securely.
- The fitting allows mounting on a wall with thickness of up to 0.25" (6.5 mm) or as a blind installation on a 1/2" female NPT thread on a wall or flange (such as the optional Flange-1/2). See below for more details.
- The fitting includes an inner and outer part, two rings, two washers and a nut. When the fitting is installed the two rings clamp onto the body of the Pitot when the two fitting halves are tightened together.
- All the parts must be inserted separately over the body of the Pitot before the fitting is assembled and clamped. The Pitot can be repositioned by loosening the inner part of the fitting.
- Material: stainless steel and Teflon or graphite for one of the rings.
- Max operating temperature: 400°F (204°C)



## Limitations of Usage and Cautions

FlowKinetics™ LLC's products including, but not limited to, instruments, sensors, probes and accessories are not "intrinsically safe", and must not be used in dangerous or hazardous areas. Servicing of these instruments incorporating battery changing must only occur in a safe area. Use of the FKS series may require working in a hazardous environment. Necessary safety precautions must be followed.

FlowKinetics™ LLC's products are not authorized for use as any component in a life support system or device or as component of an aircraft's on board flight system. Life support systems or devices are defined as any system that can sustain, monitor or support life.

Any attempts to service or modify or alter the product in any way, will void the warranty and will negate any right of claim against FlowKinetics™ LLC, relating to any liability in respect of the product.